



## Fibosel®

# Powerful immunomodulator and insurance policy in disease prevention

### Why FIBOSEL?



#### Disease pressure

Bacterial, viral, parasitic and fungal diseases remain an important concern in animal production systems



#### Immune support

Yeast  $\beta$ -glucans are well-known to activate primary defenses and help initiate a fast and effective immune response

#### Fibosel

Based on a specifically selected yeast strain, Fibosel is processed to guarantee consistent product quality. The essential yeast cell wall architecture is preserved, while exposing the  $\beta$ -glucans for effective interaction with the immune system.

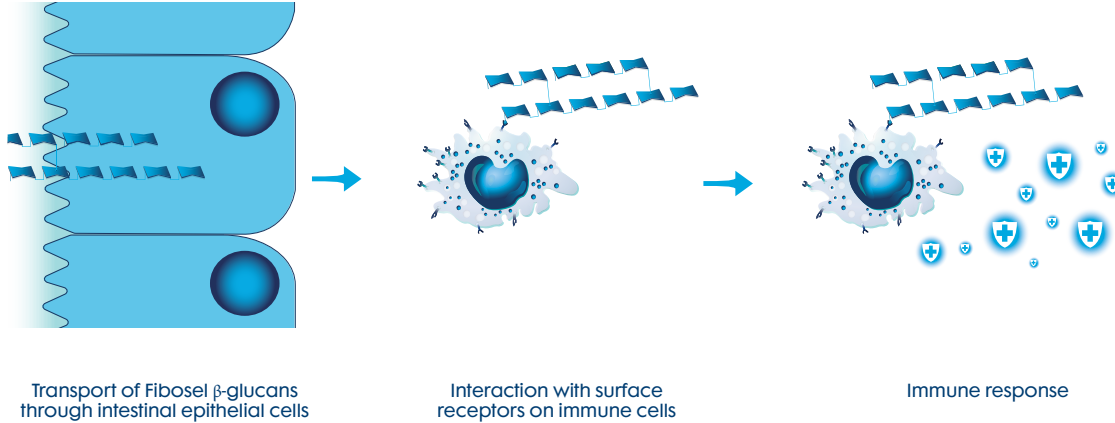


#### The business challenge

Production animals are continually exposed to potential pathogens. Especially during challenging periods such as the starter phase (transition from maternal to acquired immunity), weaning, transport and mixing, their defenses are under pressure and disease outbreaks can cause significant mortality and reduced performance.

## Supporting the immune system, safeguarding health and performance

- Fibosel  $\beta$ -glucans mimic antigens passing through the intestinal cell wall where they can interact with cells of the immune system.
- Surface receptors on phagocytes can very effectively interact with Fibosel due to the specific yeast cell wall architecture and exposure of  $\beta$ -glucans in Fibosel ("lock-and-key principle").
- Activated immune cells can rapidly orchestrate the response of the innate immune system (including phagocytosis of potential pathogens) and interact with the adaptive immune system (for example, through antigen presentation to lymphocytes).

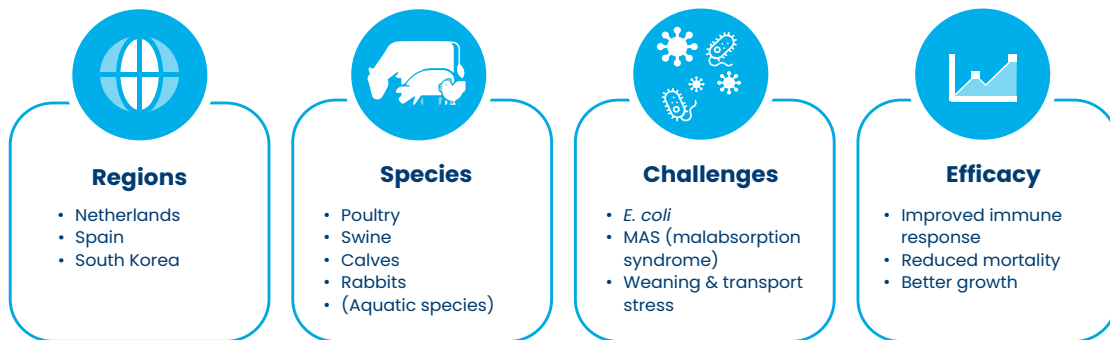


## Improving performance with Fibosel

### Proven results

- Yeast  $\beta$ -1,3/1,6-glucans have been extensively tested; their efficacy in supporting the immune system is widely recognized.
- Fibosel has been tested in a variety of regions, species and conditions:

### 16 R&D studies & field trials in land animal species:



## Recommended use

- Fibosel is recommended for functional health feeds.
- It can be incorporated both in premixes as well as extruded and pelleted feed.
- Recommended inclusion levels are 50-500 g/ton feed, depending on species, challenge level and other customer-specific circumstances.

For the optimal inclusion level and integration into a customer-specific health feeding programme, please contact your Trouw Nutrition representative.

Learn more visit :



### Summary

**Product:** Fibosel®

**Benefit:** Supports the immune system during challenging periods

**Use for:** All species

**Programme:** Health and production efficiency

**Ask your Trouw Nutrition representative how Fibosel can support your animals' immune system during challenging periods and help safeguard their productivity.**

**Disclaimer:** The information in this document is believed to be correct as of the date issued. Given the variety of factors that can affect the use of a Selko product, the user is responsible for determining whether the Selko product and dosage is fit for a particular purpose and suitable for user's method of use. Selko B.V. or any of its affiliates makes no warranties, including but not limited to warranty of merchantability or fitness for a particular purpose. Product labelling and associated claims may differ based on government requirements. All quotations, orders, confirmations and transactions are subject to our General Conditions of Sale ([www.nutreco.com](http://www.nutreco.com)). The applicability of any other terms and conditions is explicitly rejected. Trials are supported by Trouw Nutrition R&D. © Trouw Nutrition. The trademarks shown in this document are registered in The Netherlands, The USA and other countries. These trademarks are owned by Selko B.V. or Micronutrients USA LLC or Trouw International B.V. IntelliBond products are registered as Selko IntelliBond in The Netherlands, and other countries.

**Registration Holder:** Trouw Nutrition South Africa (Pty) Ltd | Co.Reg.No. 1987/000152/07 | 137 Terrace Road, Sebenza, 1619 | Tel: +27 11 524 0440  
Fibosel Reg. No. V29908 (Act 36 of 1947)